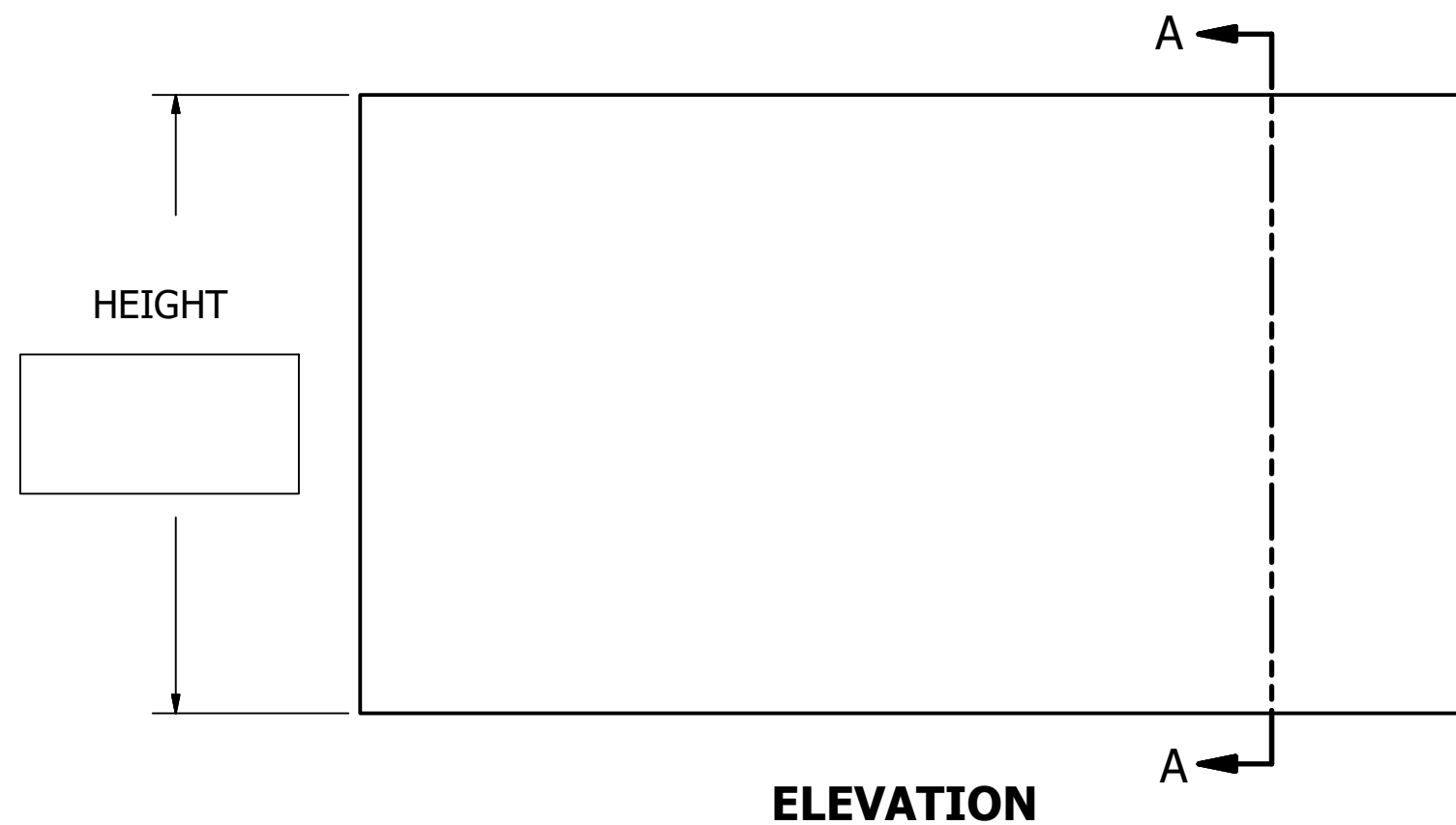
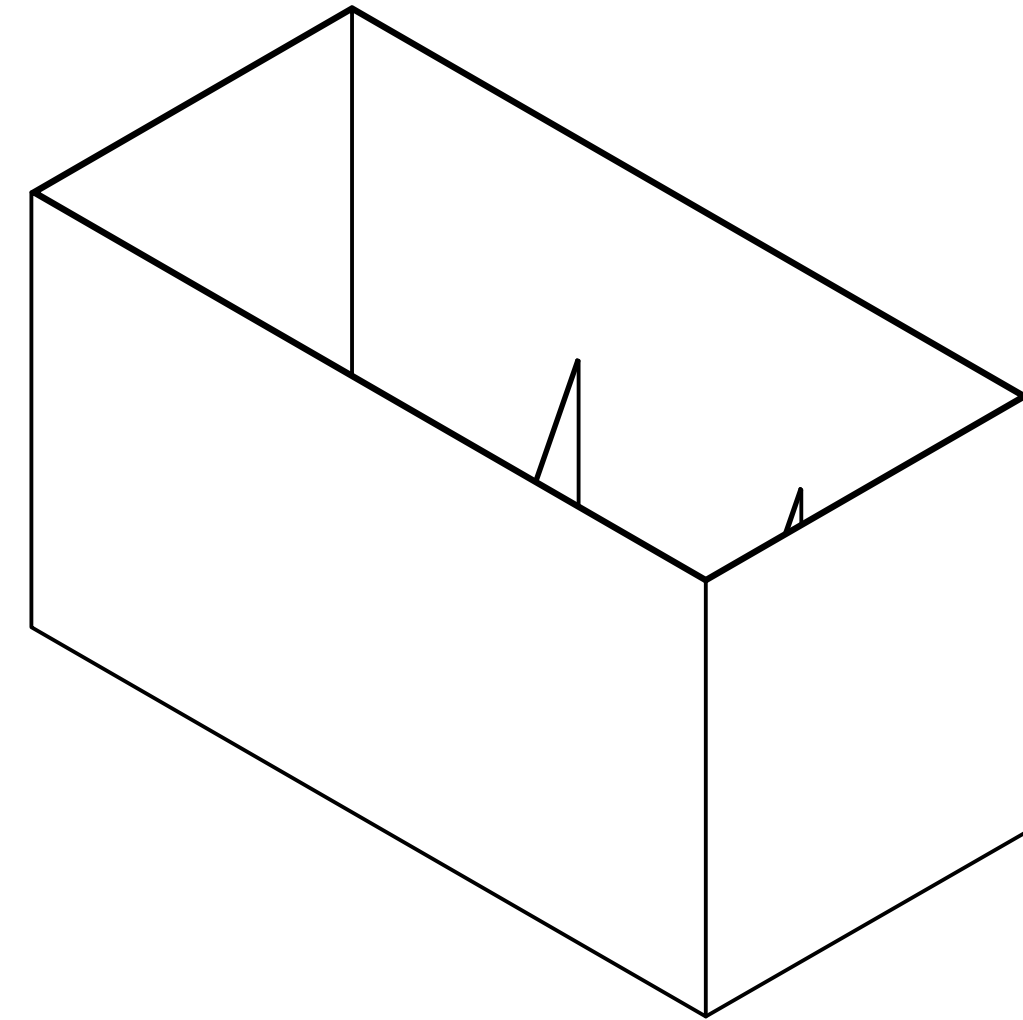
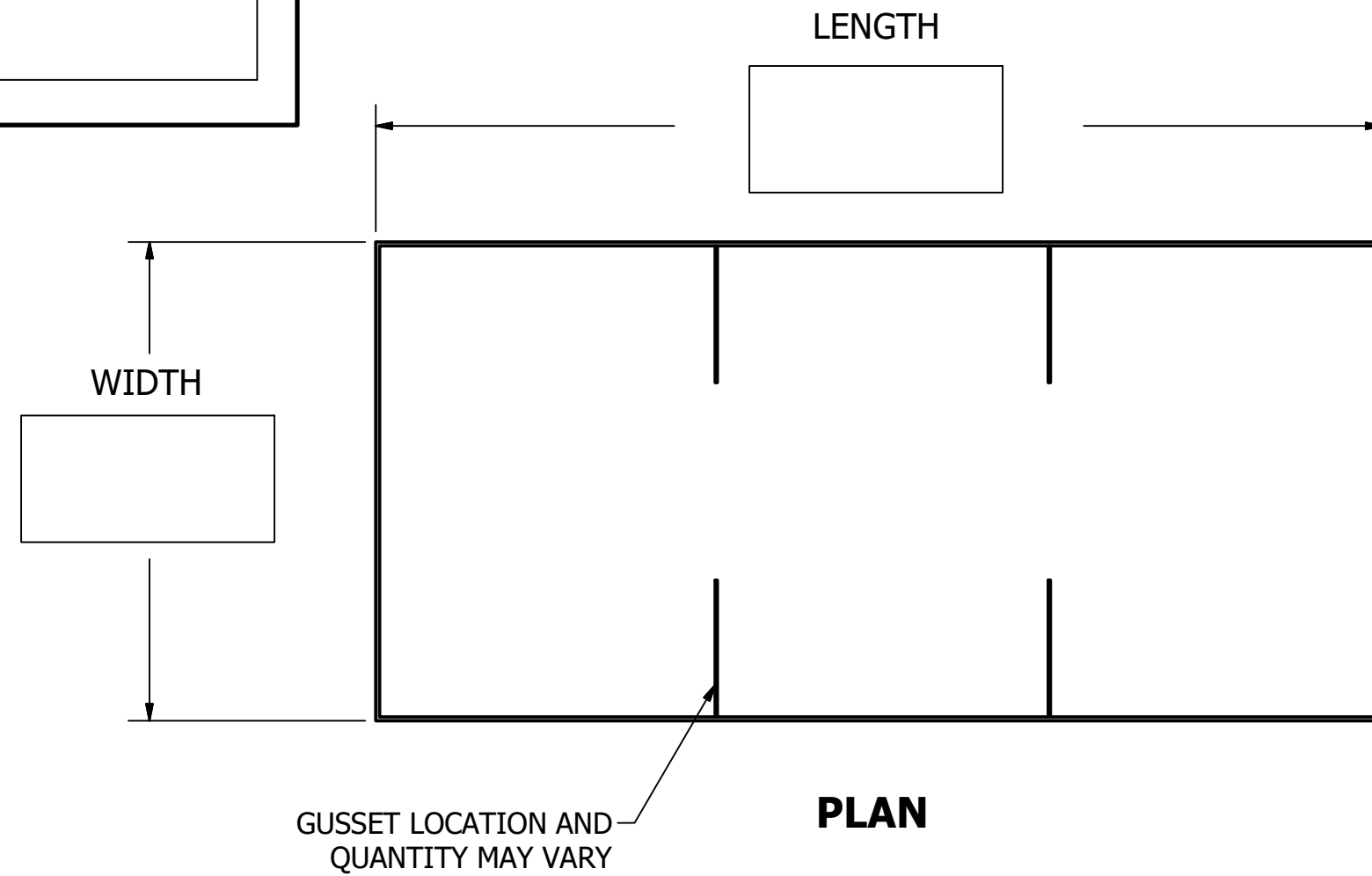


COMPANY NAME
CLIENT NAME
DATE
QUANTITY

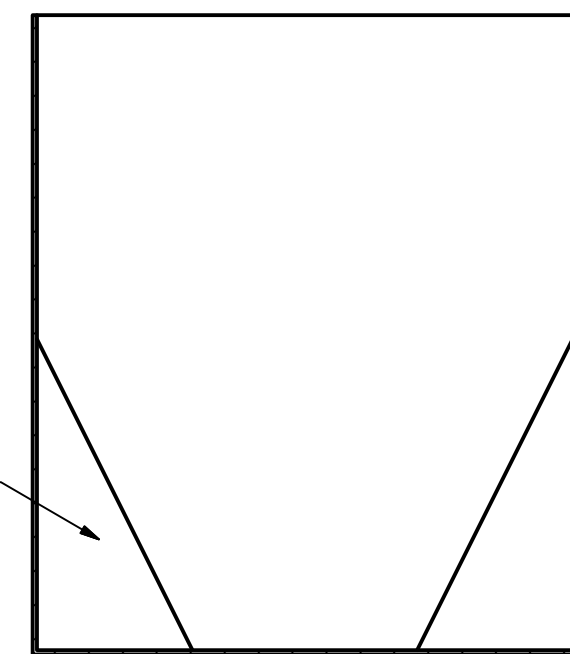
PLEASE COMPLETE FOR EACH UNIQUE PLANTER LINER
(DIMENSIONS IN INCREMENTS NO SMALLER THAN 1/8")

APPROVAL:

Signature authorizes Tournesol Siteworks
to manufacture the product as shown



GUSSET SIZE MAY VARY
(TYPICALLY HALF WALL HEIGHT)



SECTION A-A


TO BE COMPLETED BY TOURNESOL SITEWORKS

ORDER NUMBER:

PART NUMBER:

NOTES: UNLESS OTHERWISE SPECIFIED

- 1) MATERIAL: 1/4" THK STRESS-RELIEVED POLYPROPYLENE
- 2) BEAD WELDED AT ALL SEAMS
- 3) ALL DIMENSIONS SHOWN ARE NOMINAL ACTUAL SIZE MAY VARY +/- 1/4"
- 4) LARGE PLANTER LINERS MAY REQUIRE ADDITIONAL SEAMS

	Tournesol Siteworks 2930 Faber Street, Union City, CA 94587		TITLE
	DRAWN: 4/5/2018		C1 APPLICATION SHEET WELDED PLASTIC LINERS
SIZE	DWG NO		REV
C	C1 MODIFICATIONS - WPL		B
ALL DIMENSIONS IN INCHES		SCALE	MATERIAL: POLYPROPYLENE SHEET 1 OF 1